



CONTRACTING & REAL ESTATE

EXCLUSIVELY FOR THE ELITES

#BE THE TREND

CONTENT


About Us	4 - 7
Our Client	8 - 11
Our Direction	2 - 25
Services	26 - 29
OUR PROJECTS	
Industrial	30 - 37
Commercial	38 - 51
Medical	52 - 53
Educational	54 - 57
Residential	58 - 89
Other projects	90 - 97

ABOUT US

WITH 10 YEARS IN THE MARKET, SOLIC is one of the largest leading companies in the field of contracting. Solic is a full service, contemporary company that offers superior design solutions. Established in 2011, it aims to render quality design services to clients. To achieve this, their team works seamlessly to create luxurious and high class Interiors. Solic has completed more than 100 projects in Egypt ranging from private residential villas and to multi-use commercial projects, Clubs, Cafes , Companies , Universities, Hotels, Shopping Malls, administrative buildings, and ultra-luxurious residential compounds.

To date, the total number of employees at solic is 100 full-time employees and around 50 on part-time basis. 10 years of Solic . We are ecstatic to reach this milestone and proud to bring years worth of innovations to the design industry. It marks a long journey, from a one-man show to the birth of a one-stop ultimate design destination. Achieved by hard work, concerted efforts, and exceptional vision, going above & beyond everyday into the foreseeable future.

Our business model incorporates local and international brands with multiple partnerships including but not limited to Schneider Electric, Decorative Glass, Jotun, and Grohe. This approach allows us to quickly review a number of options. We fuse creative experimentation with technical knowledge to come up with creative yet practical solutions.

Our comprehensive knowledge and longstanding relationships with specialists and the trades is unparalleled. We don't hesitate to partner with specialists on projects as required along with unique collaborations, such as Majid Al Futtaim , City Center , Mivida , Marassi , Hyde Park , Sodic , Hacienda Bay , La Vista , Soft Buy , New Giza , Bonjorno , Edita , LG , Unilever , Pharma , Marakez , palm Hills , Beverly Hills , Lake View , Mountain View , Porto October , GUC University , MSA University , European University , Kattameya Mall , Kargo Mall , Cairo Festival City Mall , Mall of Egypt. Solic is exclusively the sole agent for the global gypsum board german brand 

An inter-disciplinary firm founded in 2011, TODAY SOLIC stands a market leader for luxury residential architecture – offering full design packages for every area of your home, We have built a solid reputation for the highest standards in design excellence.

Our Team works on accuracy and innovation applying optimum quality measures and standards, We makes appropriate plans with accurate and sensitive calculations for all the circumstances and time schedule plans of each client separately in terms of the dates of receipt ,payment plans,delivery date before implementation . We offer special tailored plans for each single client based on the fact that ; our priority and goal is to achieve client satisfaction with the best innovative work meeting ideal quality standards.

OUR MISSION

Our work is personal. The team you meet on day one will be your project collaborators from start to finish. Clients always value our personalized attention along with our designers' seasoned experience, integrity, and creative excellence. Our core team has worked together for over 10 years and each bring their unique design vocabulary to a project. United with a professional approach we aim to deliver comprehensive interior design turnkey solutions characterized by distinctions, supreme quality, great attention to detail, on time and within budget.

Creative design providing architectural, interior design, project management and furniture procurement services for clients across the globe. We design innovative retail, residential, hospitality, office and integrated mixed-use developments, with a focus on the people who use them.

Our team is committed to creating unique and memorable destinations, projects and places that enhance the surroundings of the clients and improve the lives of those who populate and move through them daily.



OUR VISION

We address every project with an open mind that's continuously eager for knowledge and always keen to listen. We live for discovery and seek for the right answers in everything that we do, to make sure that all the clients' needs are always clearly met.

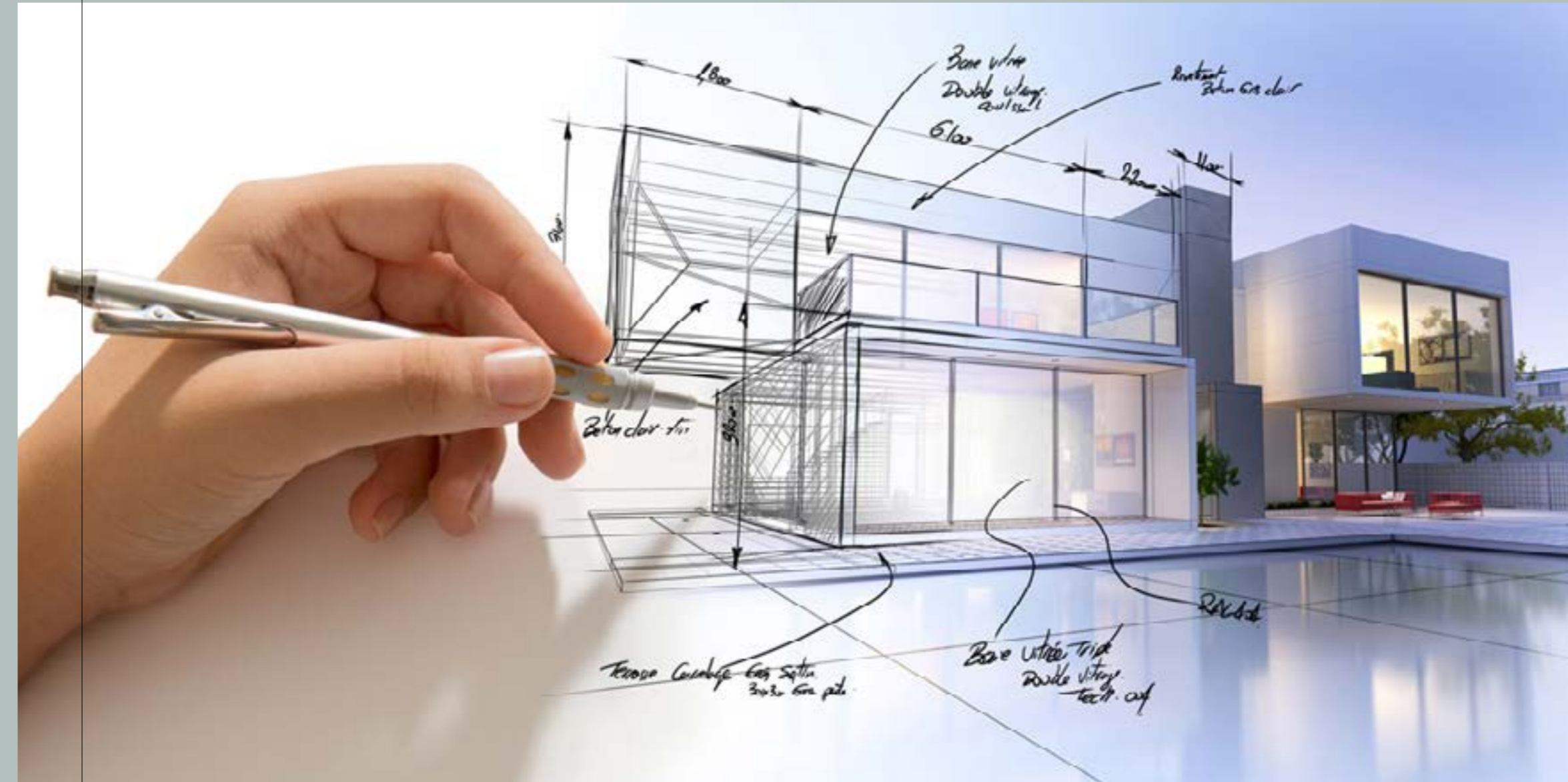
Inquisitive, Explorative, Persistent, Creative, Analytical. These five elements are as important to a scientist as they are to a designer. Design is a multi-faceted profession in which creative and technical solutions are applied, to build a cosy and comfortable living environment.

Our dedication for excellence has no bounds, to ensure that we can consistently deliver a quality home that the clients can proudly call their own. We make sure that our design aesthetic is both pleasing to the eye and functional. Both science and intuition are the tools we use to let the clients vision come to life.

Some stories have no end because of the value behind them, and the main value that makes our story eternal is that we share with our customers the happiest moments, as we watch their dreams being brought to life.

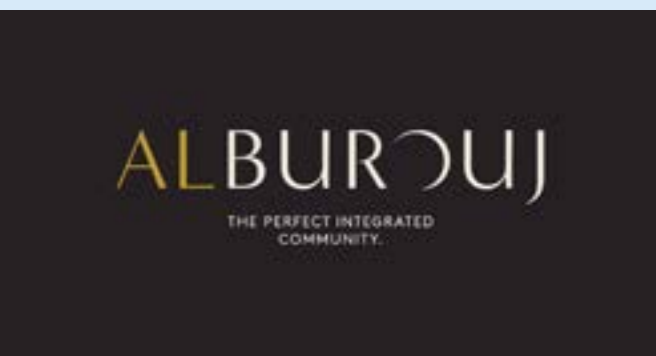
SOLIC – your one stop solution to all things design.

Solic teams make sure clients are involved in every milestone of the project to ensure it is a success. The result is an engineering masterpiece that both the client and us truly pride.



OUR CLIENTS

We are honored to be part of ;



OUR CLIENTS

We are honored to be part of ;





OUR DIRECTIONS



CLASSIC

Classical interior design is a blend of both Greek and Roman interior design. This designing basically deals with perfect harmony, balance and order. Giving your interiors a classical look means bringing them much closer to the earlier period when interior designs like Rococo, Victorian and many such were in trend. Classical interior designing has its own aura and is one which never goes out of style. So if you so wish to style your place in a more traditional manner here are some classical interior designing ideas that will surely help you in your interior décor.

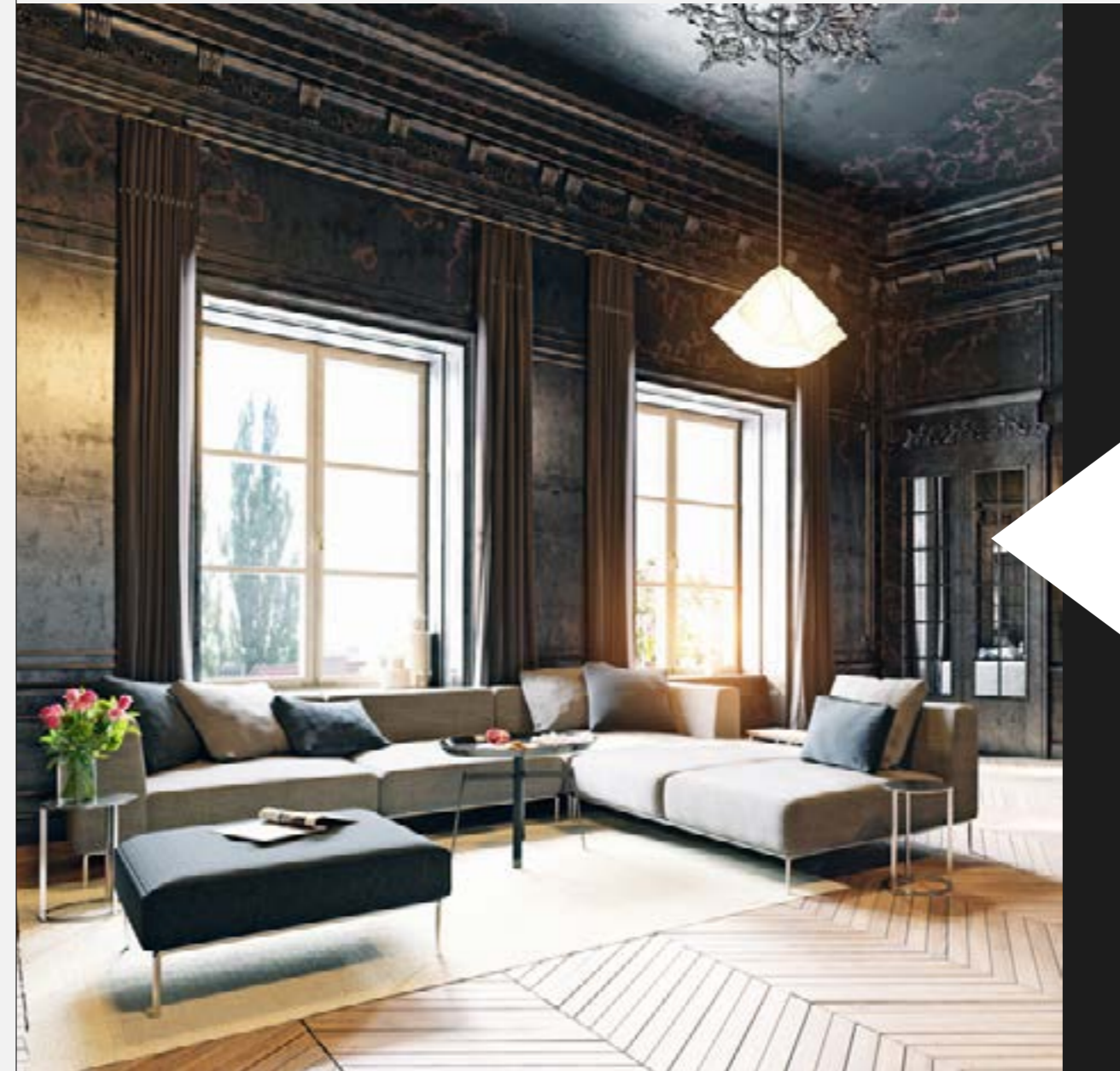
Good design is good business



MODERN

Modern is a broad design term that typically refers to a home with clean, crisp lines, a simple color palette and the use of materials that can include metal, glass and steel. Modern design employs a sense of simplicity in every element, including furniture. A word that's commonly used to describe modern style is sleek, and there is not a lot of clutter or accessories involved with a modern style.

*Home should feel
Collected, not decorated*



NEW CLASSIC

The classic interior house design originated from the European culture, like Victorian and Art Deco also the Greek and the Roman are the main inspirations of the classic design. The classic design and the modern design are mixed together and the result was new classic style.

*Every great design begins
With an even better story*



MINIMALIST

The minimalist concept is one that's popular here in Australia. It takes notions of modern design and simplifies them further. Color palettes are neutral and airy; furnishings are simple and streamlined, and nothing is excessive or flamboyant in accessories or décor. Minimalism is ultimately defined by a sense of functionality and ultra-clean lines.

*Simplicity is the
Ultimate Sophistication*



INDUSTRIAL

Industrial style as the name implies, draws inspiration from a warehouse or an urban loft. There's a sense of unfinished rawness in many of the elements, and it's not uncommon to see exposed brick, ductwork and wood. An iconic home with an industrial design theme would be a renovated loft from a former industrial building. Think high ceilings, old timber and dangling metal light fixtures with sparse functional furniture. There may possibly be one or two pieces of abstract art or photography to add a dash of color to an otherwise neutral color scheme derived from the primary materials of wood and metals.

*We shape our homes and
Then our homes shape us*



MID-CENTURY MODERN

Mid-century modern is a throwback to the design style of the mid-1900s—primarily the 1950s and 60s. There's a retro nostalgia present in Mid-Century Modern Design, and also some elements of minimalism. Functionality or «fussy-free» was the main theme for Mid-century design. It emphasizes on pared-down forms, natural or organic shapes such as «egg-shaped» chair, easy-to-use contemporary designs and simple fabrications. It easily complements any interior and also helps with seamless transition from interior to exterior.

Design adds value faster than it adds costs



SCANDINAVIAN

Scandinavian design is a design movement characterized by simplicity, minimalism and functionality that emerged in the early 20th century, and subsequently flourished in the 1950s throughout the five Nordic countries: Norway, Sweden, Finland, Denmark, and Iceland. With a focus on craftsmanship, materials and clean lines, the philosophy behind the style remains relevant today. Designed to maximize light at every turn, Nordic interiors also began to favor pale-colored walls and flooring and spaces free of clutter and ornamentation.

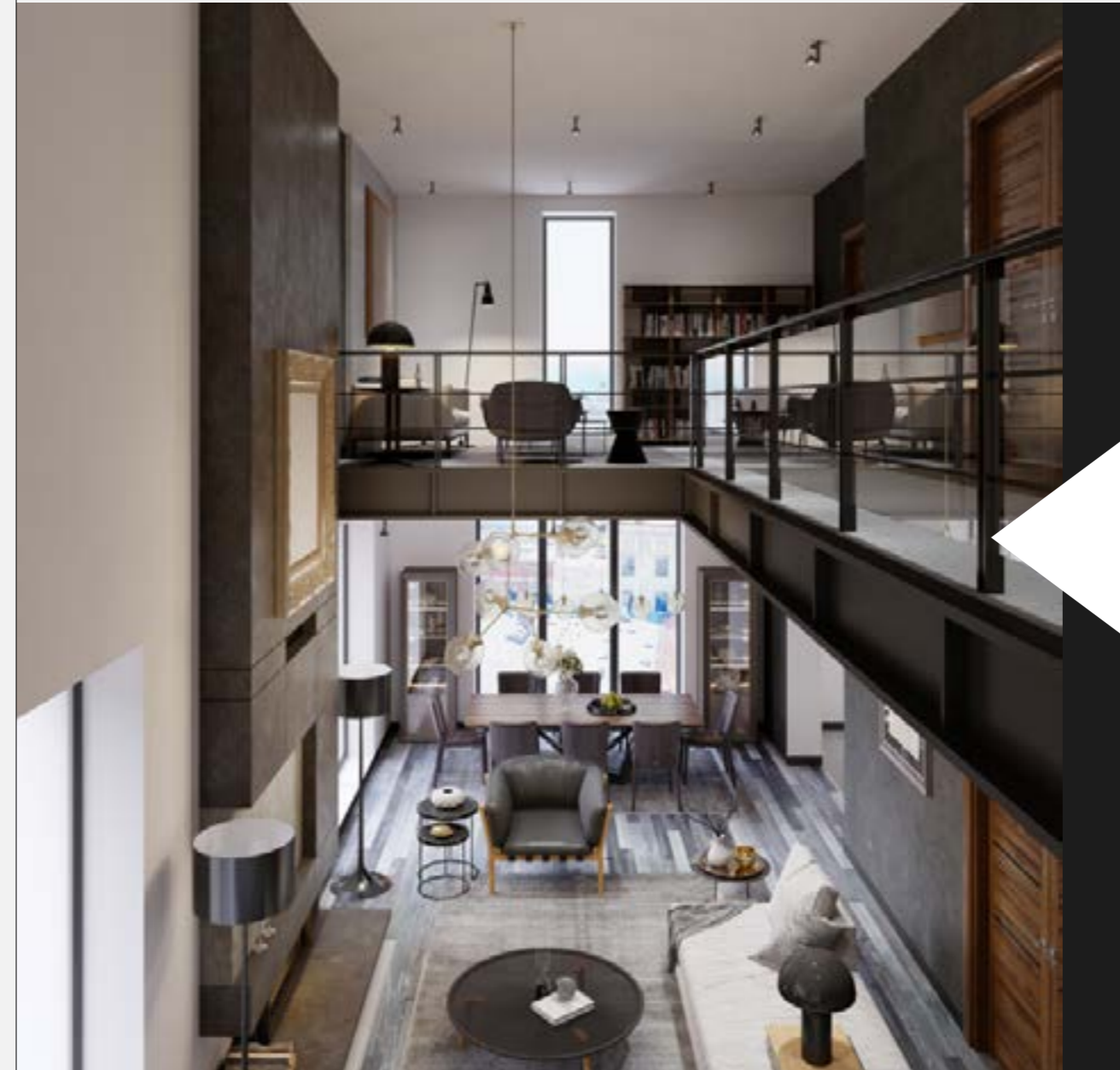
Design is so simple, that's why it is so complicated



TRADITIONAL

Traditional design style offers classic details, sumptuous furnishings, and an abundance of accessories. It is rooted in European sensibilities. Traditional homes often feature dark, finished wood, rich color palettes, and a variety of textures and curved lines. Furnishings have elaborate and ornate details and fabrics, like velvet, silk and brocade, which may include a variety of patterns and textures. There's depth, layering and dimensionality within most traditional designs.

*Good design is a
Language, not a style*



TRANSITIONAL

Transitional is a very popular style because it borrows from both traditional and modern design to facilitate a space that's not too much,» in terms of one style or another. There's a sense of balance that's appealing and unexpected. A transitional design may incorporate modern materials, such as steel and glass, and then unite them with plush furnishings. Transitional design also includes relatively neutral color palettes, creating a calming and relaxed space that manages to feel both stylish and sleek, as well as warm and inviting.

*Design is intelligence
Made visible*



FRENCH COUNTRY

Warm, earthy colors are indicative of a French Country design style, as are worn and ornamental wooden furnishing. The style has an overarching farmhouse inspiration. French Country design may include soft and warm tones of red, yellow or gold and natural materials like stone and brick. French Country design can include recollections of ornate porcelain dishes and heavy linens and bed coverings.

*Design creates culture.
Culture shapes values*



BOHEMIAN

Bohemian is a popular style for home design and fashion. It reflects a carefree lifestyle with little rules, except to follow your heart's desire. Bohemian homes may include vintage furniture and light fixtures, globally inspired textiles and rugs, displays of collections, and items found in widely varied sources including flea markets and during one's travels. It's not uncommon to spot floor pillows and comfortable seating spaces when incorporating the bohemian style. This eclectic style can incorporate an ultra-glam chandelier paired with a well-worn rug and a mid-century chair. Within the Bohemian style, there's a laissez-faire attitude where anything goes as long as you love it.

*We shape our homes and
Then our homes shape us*



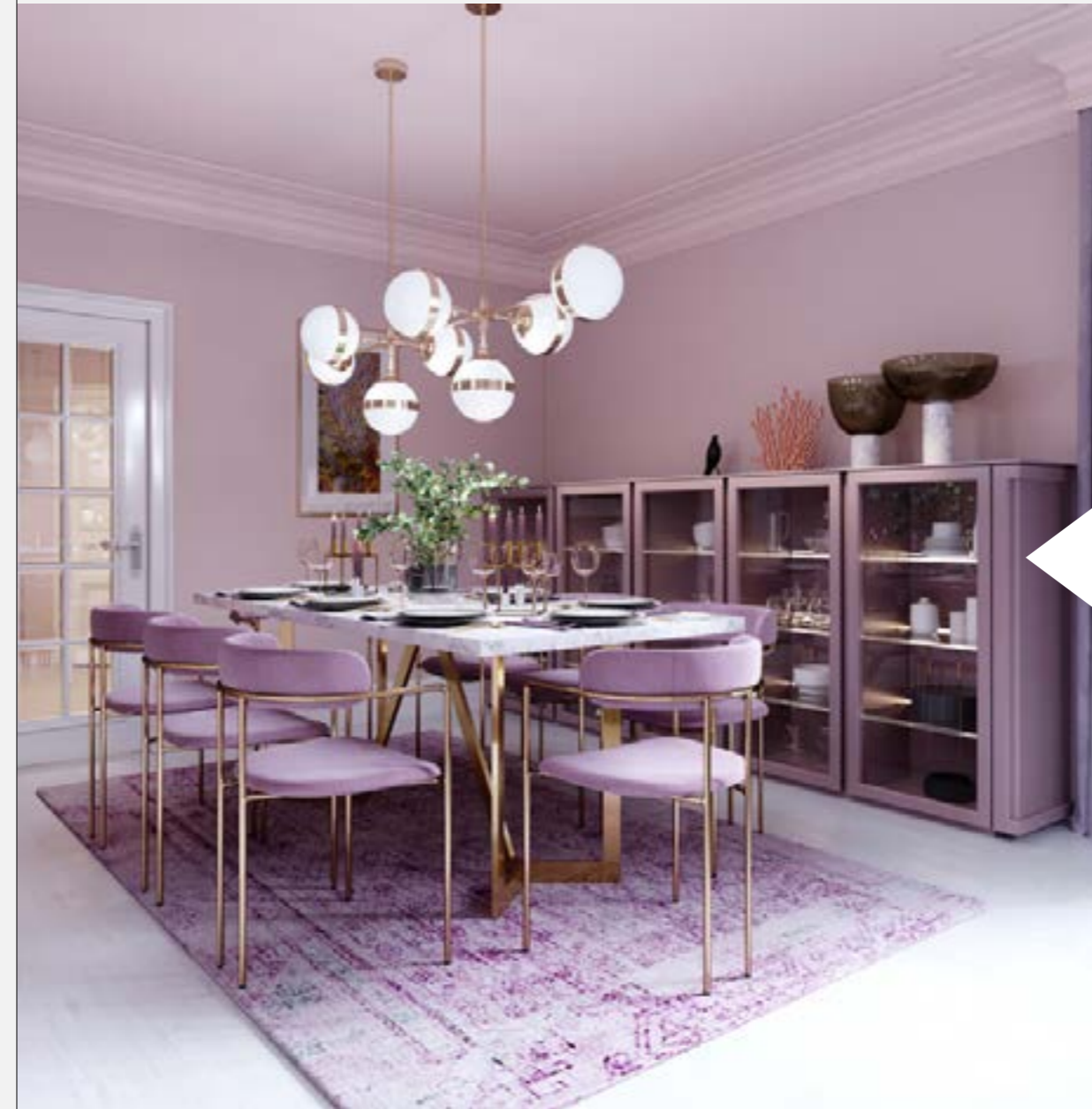
RUSTIC

Rustic design is drawn from natural inspiration, using raw and often unfinished elements including wood and stone.

Rustic design may incorporate accessories from the outdoors with warmth emulating from the design and architectural details that may include features like vaulted ceilings adorned with wood beams or reclaimed wood floors.

Many designs now integrate rustic design with more modern furnishings and accessories.

*Home should feel
Collected, Not decorated*



HOLLYWOOD GLAM

Also referred to as Hollywood Regency, Hollywood Glam is a design style that tends to be luxurious, over-the-top and opulent. It's a dramatic design style, perfect for a homeowner who enjoys making a statement.

This design style can incorporate some features of Victorian design, including plush, velvet furnishings, tufting and antiques. The color palettes are particularly bold-think purples, reds and turquoise.

*We shape our homes and
Then our homes shape us*



OUR SERVICES

EXTERNAL FIT OUT

- Gypsum works
- Buildings
- Concrete ordinary / reinforced

INTERIOR FIT OUT

- Ceramics
- Conch
- Painting
- Electricity
- Stones
- Marble

LANDSCAPING

- Carpentry
- Pergolas
- Agriculture
- Paving
- Interlock flooring

“Quality is not act. it is a habit.” ~Aristotle

EXECUTIVE STRUCTURE

- Project manager for each project .
- An implementation manager for each staff .
- Safety and security engineers to ensure that there are no accidents during workflow .
- Quality control engineers to monitor work and hand over the consultant .
- Implementation engineers and experienced supervisors to supervise the implementation and ensure the progress of work according to the plates, specifications, industry principles, and the consultant's delivery .
- A technical office for approving the plates and counting the quantities .
- Working wheels specializing in all items .
- Time Planner for creating specific timesheets .





OUR PROJECTS (INDUSTRIAL)

BONJORNO FACTORY

1- CERAMIC ITEM 2- WHITENESS ITEM 3- BUILDING ITEM
GYPSUM WORK ITEM

1- FIRE RATED CEILING PLASTER

2- REGULAR GYPSUM PLASTER. 3- FIRE RATED GYPSUM

4- TILES ARMSTRONG - VINYL

DURATION 3 MONTHS

IMPLEMENTERS NO. 1500



LG FACTORY

1- CERAMIC ITEM 2- THE WHITENESS ITEM 3- THE BUILDINGS ITEM
GYPSUM WORK ITEM

1- FIRE RATED CEILING PLASTER

2- REGULAR CEILING GYPSUM 3- FIRE RATED 4- STAIRCASE GYPSUM DOUBLE FIRE RATED 5-
WALL GYPSUM FIRE RATED 6- ARMSTRONG TILES - VINYL

DURATION 3 MONTHS
IMPLEMENTERS NO. 1500



HENKEL FACTORY

GAMMA CORPORATION

1- INTERLOCK FLOORING ITEM 2- BUILDINGS ITEM

DURATION 2 MONTHS
IMPLEMENTERS NO. 600



UNILEVER FACTORY

1- THE CERAMICS CLAUSE 2- THE WHITENESS CLAUSE 3- THE BUILDINGS CLAUSE
GYPSUM WORK ITEM

1- FIRE RATED CEILING GYPSUM 2- REGULAR CEILING GYPSUM 3- FIRE RATED GYPSUM 4-
ARMSTRONG TILES - VINYL

DURATION 3 MONTHS
IMPLEMENTERS NO. 1500

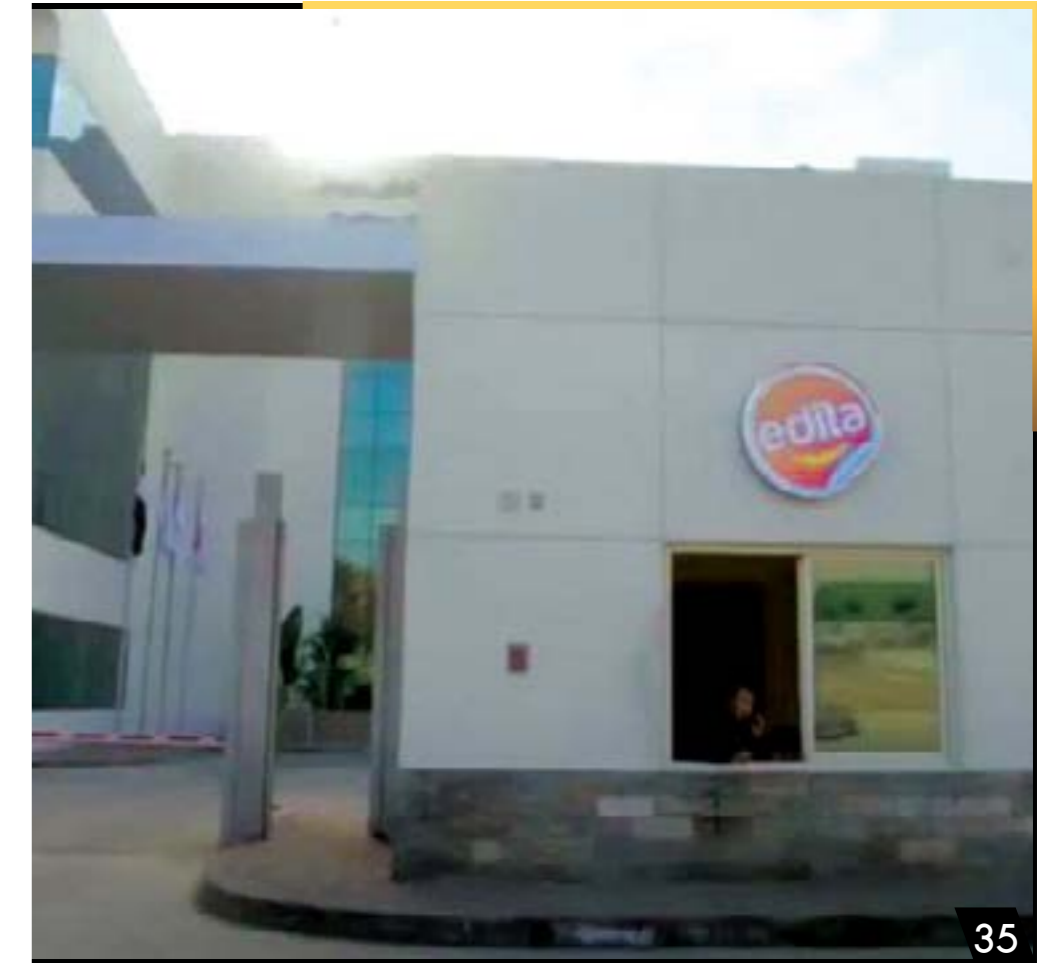


EDITA FACTORY

GAMMA CORPORATION

1- BUILDING ITEM 2- WHITE ITEM 3- INTERLOCK ITEM 4- CURBSTONE ITEM

DURATION 3 MONTHS
IMPLEMENTERS NO. 1300



MIVIDA PROJECT EMAR

COMPANY (CONCRETE PLUS) THE SOCIAL CLUB - MOSQUE

1- THE WHITE ITEM 2- BUILDINGS ITEM 3- SUSPENDED CEILINGS ITEM 4- PAINTS ITEM

AL SHAFAR COMPANY - WAREHOUSE OF IRON (GMALON)

1- PAVEMENT AND ROAD WORKS 2- ASPHALT AND PLANNING PAINTS 3- INTERLOCK WORKS

4- BARDOURA WORKS 5- CONCRETE WORKS 6- BUILDING WORKS 7- STONE WORKS 8- GRANITE WORKS

DURATION 5 MONTHS IMPLEMENTERS NO. 4000



CAIRO FESTIVAL CITY PROJECT

AL SHAGAFAR COMPANY

1- GYPSUM WORKS 2- PAVING WORKS 3- INTERLOCK WORKS 4- CURBSTONE WORKS

DURATION 3 MONTHS

IMPLEMENTERS NO. 1300





OUR PROJECTS
(COMMERCIAL)

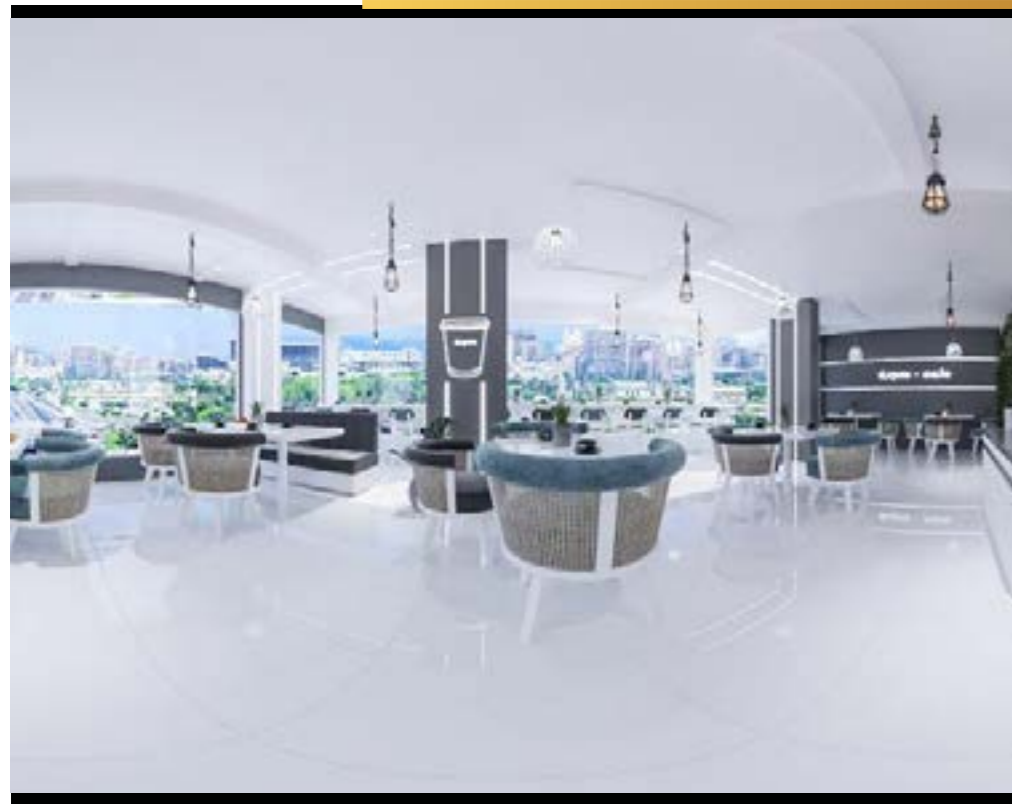
ASPRO CAFE

2D & 3D MAX DESIGNS

1- BUILDINGS CLAUSE 2- ELECTRICITY CLAUSE 3- PLUMBING CLAUSE 4- INSULATION CLAUSE 5- GIBSORD CLAUSE 6- WHITE-NESS CLAUSE 7- EXTERNAL FACADE CLAUSE 8- ADAPTATION CLAUSE 9- GLASS CLAUSE 10- ALUMETAL CLAUSE 11- INSULATION CLAUSE 12- CERAMIC CLAUSE 13 - PAINTS ITEM 14- CARPENTRY ITEM 15- KITCHEN ITEM INCLUDING EQUIPMENT 16- MARBLE ITEM 17- TILES CLAUSE 18- CLADDING CLAUSE 19- FINAL DÉCOR ITEM INCLUDING ALL ACCESSORIES.

DURATION 3 MONTHS

IMPLEMENTERS NO. 450

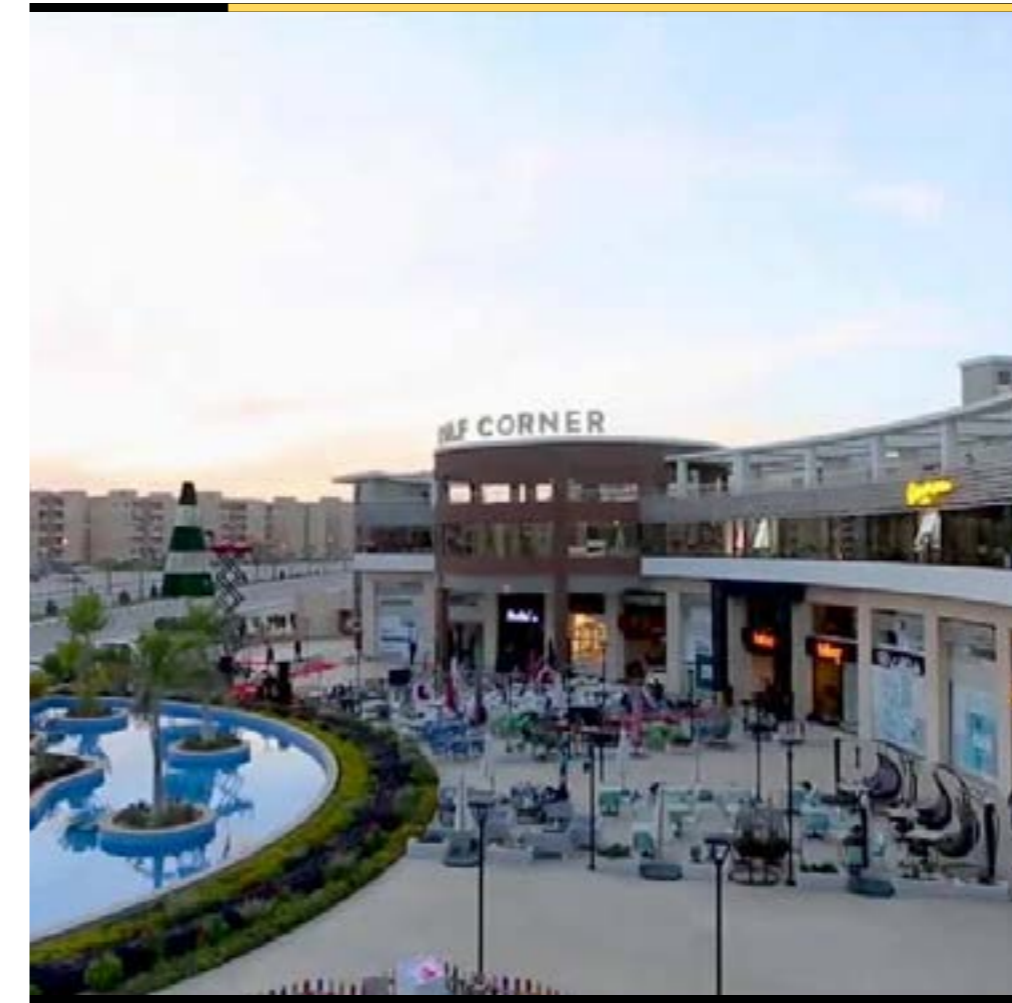


GOLF CORNER CAFE

1- GYPSUM WORKS 2- PAVING WORK 3- INTERLOCK WORKS 4- CURBSTONE WORKS 5- BUILDING WORKS 6- WHITENESS WORKS

DURATION 5 MONTHS

IMPLEMENTERS NO. 2400



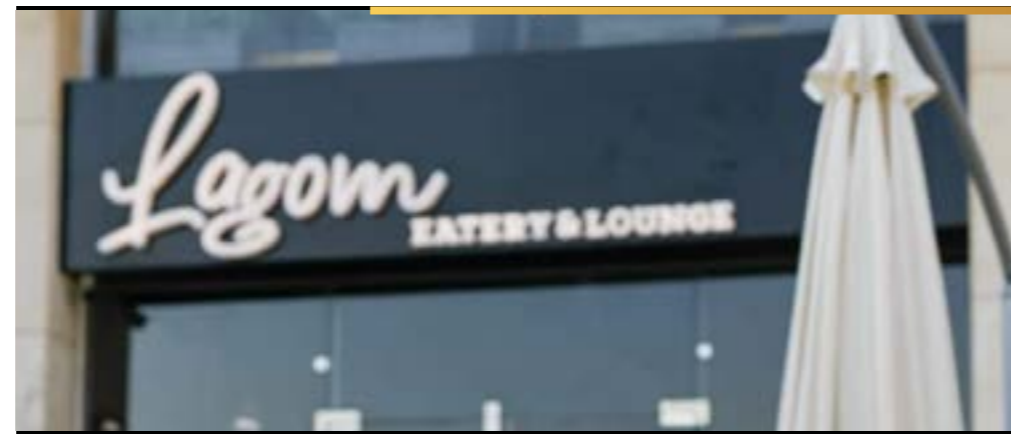
LAGOME CAFE

2D & 3D MAX DESIGNS

1- BUILDINGS CLAUSE 2- ELECTRICITY CLAUSE 3- PLUMBING CLAUSE 4- INSULATION CLAUSE 5- GIBSORD CLAUSE 6- WHITE-NESS CLAUSE 7- EXTERNAL FACADE CLAUSE 8- ADAPTATION CLAUSE 9- GLASS CLAUSE 10- ALUMETAL CLAUSE 11- CERAMIC CLAUSE 12 - PAINTS ITEM 13- CARPENTRY ITEM 14- KITCHEN ITEM INCLUDING EQUIPMENT 15- MARBLE ITEM 16- TILES CLAUSE 17- CLADDING CLAUSE 18- FINAL DÉCOR ITEM INCLUDING ALL ACCESSORIES.

DURATION 3 MONTHS

IMPLEMENTERS NO. 450



CITY CENTRE

1- GYPSUM BOARD ITEM 2- METAL STRUCTURE ITEMS

DURATION 45 DAYS

IMPLEMENTERS NO. 500



KARGO MALL

GYPSUM WORKS ITEM

1- FIRE RATED CEILING GYPSUM 2- REGULAR CEILING GYPSUM 3- FIRE RATED GYPSUM 4- WALL GYPSUM

DURATION 3 MONTHS

IMPLEMENTERS NO. 40



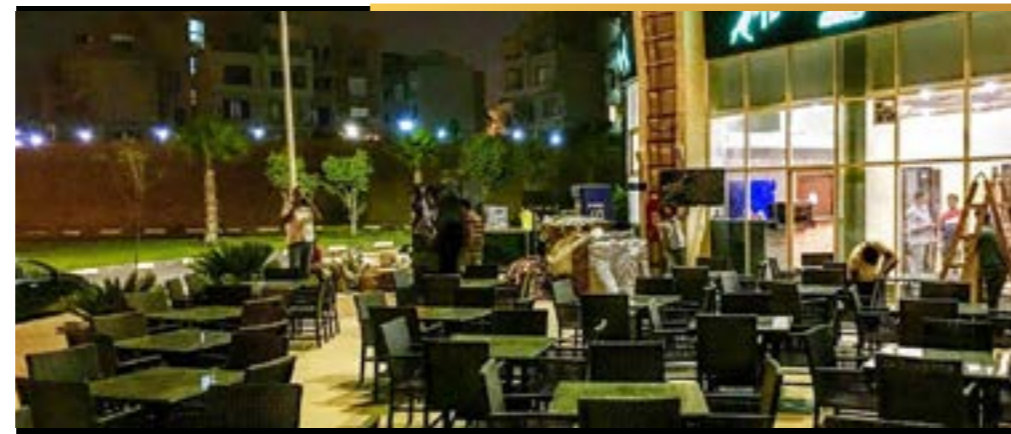
CAVLINO CAFÉ & RESTAURANT

2D & 3D MAX DESIGNS

1- BUILDINGS CLAUSE 2- ELECTRICITY CLAUSE 3- PLUMBING CLAUSE 4- INSULATION CLAUSE 5- GIBSORD CLAUSE 6- WHITE-NESS CLAUSE 7- EXTERNAL FACADE CLAUSE 8- ADAPTATION CLAUSE 9- GLASS CLAUSE 10- ALUMETAL CLAUSE 11- CERAMIC CLAUSE 12 - PAINTS ITEM 13- CARPENTRY ITEM 14- KITCHEN ITEM INCLUDING EQUIPMENT 15- MARBLE ITEM 16- TILES CLAUSE 17- CLADDING CLAUSE 18- FINAL DÉCOR ITEM INCLUDING ALL ACCESSORIES.

DURATION 3 MONTHS

IMPLEMENTERS NO. 450



GOLDEN DOME HOTEL

ORASCAM COMPANY

1- CERAMIC WORKS 2- GYPSUM WORKS 4- MARBLE WORKS

DURATION 2 MONTHS

IMPLEMENTERS NO. 250



SOFT BUY

2D & 3D MAX DESIGNS

1- BUILDING ITEM 2- ELECTRICITY ITEM 3- PLUMBING CLAUSE 4- INSULATION CLAUSE 5- GIBSORD CLAUSE 6- WHITENESS CLAUSE 7- EXTERNAL FAÇADE CLAUSE 8- CONDITIONING CLAUSE 9- GLASS CLAUSE 10- LUMETAL CLAUSE 11- INSULATION CLAUSE 12- CERAMIC CLAUSE 13- PAINTS ITEM 14- CARPENTRY CLAUSE 15 - THE KITCHEN ITEM INCLUDING THE EQUIPMENT 16- THE MARBLE CLAUSE 17- THE ARTICLE 18- THE KITCHEN ITEM 19- THE FINAL DECORATION ITEM INCLUDING ALL FITTINGS

DURATION 3 MONTHS

IMPLEMENTERS NO. 400





OUR PROJECTS MEDICAL

WAVES MEDICAL COPMANY

2D & 3D MAX DESIGNS

1- BUILDING ITEM 2- ELECTRICITY 3- PLUMBING ITEM 4- INSULATION ITEM 5- GIBSORD ITEM 6- AIR CONDITIONING ITEM
7- CLAUSE OF INSULATION 8- CLAUSE OF CERAMICS 9- CLAUSE OF PAINTS 10- CLAUSE OF CARPENTRY 11- CLAUSE
CLAUSE 12- CLAUSE OF MARBLE 13- CLAUSE HDF 14- CLAUSE OF GLAZING

DURATION 2 MONTHS

IMPLEMENTERS NO. 200



OUR PROJECTS (EDUCATIONAL)



EUROPEAN UNIVERSITY

2D & 3D MAX DESIGNS

1- GYPSUM WORKS 2- PORCELIN WORKS 3- WOODEN WORKS 4- PAINT WORKS 5- ELECTRICITY WORKS

DURATION 3 MONTHS

IMPLEMENTERS NO. 150



GUC UNIVERSITY

2D & 3D MAX DESIGNS

1- GYPSUM WORKS 2- PAINT WORKS

DURATION 4 MONTHS

IMPLEMENTERS NO. 300





OUR PROJECTS
(RESIDENTIAL)

NEW GIZA

AL-ROWAD RESISTANCE COMPANY

NEW GIZA CLUB PROJECT

1- LANDSCAPING WORKS 2- HARD SCAPE WORKS 3- INTERLOCK WORKS 4- CURBSTONE WORKS 5- AGRICULTURE WORKS

CLEVER COMPANY

(BUILDINGS)

1- TILE WORKS 2- CERAMIC WORKS 3- MARBLE WORKS 4- SUSPENDED CEILING WORKS

UNIVERSITY OF NEW GIZA (COLLEGE OF ENGINEERING BUILDING)

1- SUSPENDED CEILING WORKS 2- PAINTING WORKS

COMPANY (CONCRETE PLUS)

(BUILDINGS)

1- MARBLE WORKS 2- CARPENTRY WORKS 3- SUSPENDED CEILING WORKS 4- PAINTING WORKS 5- PARQUET WORKS

6- DRY MIX WORKS 7- LANDSCAPE WORKS 8- HARD SCAPE WORKS 9 - INTERLOCK WORKS 10 - CURBSTONE WORKS 11- AGRICULTURE WORKS

GAMMA CORPORATION

(NUMBER 19 IN INTEGRATED)

1- BUILDING ITEM 2- WHITE ITEM 3- DRY MIX 4- ELECTRICITY ITEM 5- GRC ITEM 6- CARPENTRY CLAUSE 7- ITEM REQUEST 8-

MARBLE ITEM 9- FLOOR ITEM 10- PORCELAIN ITEM 11- INTERLOCK ITEM

12- HARDSCAPE CLAUSE 13- CLAUSE CLAUSE 14- STONE CLAUSE 15- INTERFACE CLAUSE 16- SECURITE CLAUSE 17- PLUMBING CLAUSE 18- INSULATION CLAUSE 19- LUMITAL CLAUSE

IOPTEC CORPORATION

(CFM PROJECT)

1- BUILDING ITEM 2- WHITE ITEM 3- CERAMIC ITEM 4- GIBBOARD ITEM

DURATION 3 MONTHS

IMPLEMENTERS NO. 450



ORASCOM NEW CAPITAL CITY



VILLETTE SODIC



MIVIDA PROJECT EMAR

COMPANY (CONCRETE PLUS) THE SOCIAL CLUB - MOSQUE

1- THE WHITE ITEM 2- BUILDINGS ITEM 3- SUSPENDED CEILINGS ITEM 4- PAINTS ITEM

AL SHAFAR COMPANY - WAREHOUSE OF IRON (GMALON)

1- PAVEMENT AND ROAD WORKS 2- ASPHALT AND PLANNING PAINTS 3- INTERLOCK WORKS

4- BARDOURA WORKS 5- CONCRETE WORKS 6- BUILDING WORKS 7- STONE WORKS 8- GRANITE WORKS

DURATION 5 MONTHS IMPLEMENTERS NO. 4000



CAIRO FESTIVAL CITY PROJECT

AL SHAGAFAR COMPANY

1- GYPSUM WORKS 2- PAVING WORKS 3- INTERLOCK WORKS 4- CURBSTONE WORKS

DURATION 3 MONTHS

IMPLEMENTERS NO. 1300



VILLAS OCTOBER PROJECT

2D & 3D MAX DESIGNS

1- BUILDING ITEM 2- ELECTRICITY ITEM 3- PLUMBING CLAUSE 4- INSULATION CLAUSE 5- GIBSWORD CLAUSE 6- IRON ITEM 7- INSULATION CLAUSE 8- CERAMIC ITEM 9- PAINTS ITEM 10- CARPENTRY CLAUSE 11- LAYING ITEM 12- MARBLE ITEM 13- HDF CLAUSE 14 - EXTERNAL FAÇADE CLAUSE 15 - FINAL DECORS CLAUSE INCLUDING ALL FITTINGS

DURATION 4 MONTHS

IMPLEMENTERS NO. 400



SOFT BUY

2D & 3D MAX DESIGNS

1- BUILDING ITEM 2- ELECTRICITY ITEM 3- PLUMBING CLAUSE 4- INSULATION CLAUSE 5- GIBSORD CLAUSE 6- WHITENESS CLAUSE 7- EXTERNAL FAÇADE CLAUSE 8- CONDITIONING CLAUSE 9- GLASS CLAUSE 10- LUMETAL CLAUSE 11- INSULATION CLAUSE 12- CERAMIC CLAUSE 13- PAINTS ITEM 14- CARPENTRY CLAUSE 15 - THE KITCHEN ITEM INCLUDING THE EQUIPMENT 16- THE MARBLE CLAUSE 17- THE ARTICLE 18- THE KITCHEN ITEM 19- THE FINAL DECORATION ITEM INCLUDING ALL FITTINGS

DURATION 3 MONTHS

IMPLEMENTERS NO. 400



VILLA HYDE PARK ONGOING PROJECT

2D & 3D MAX DESIGNS

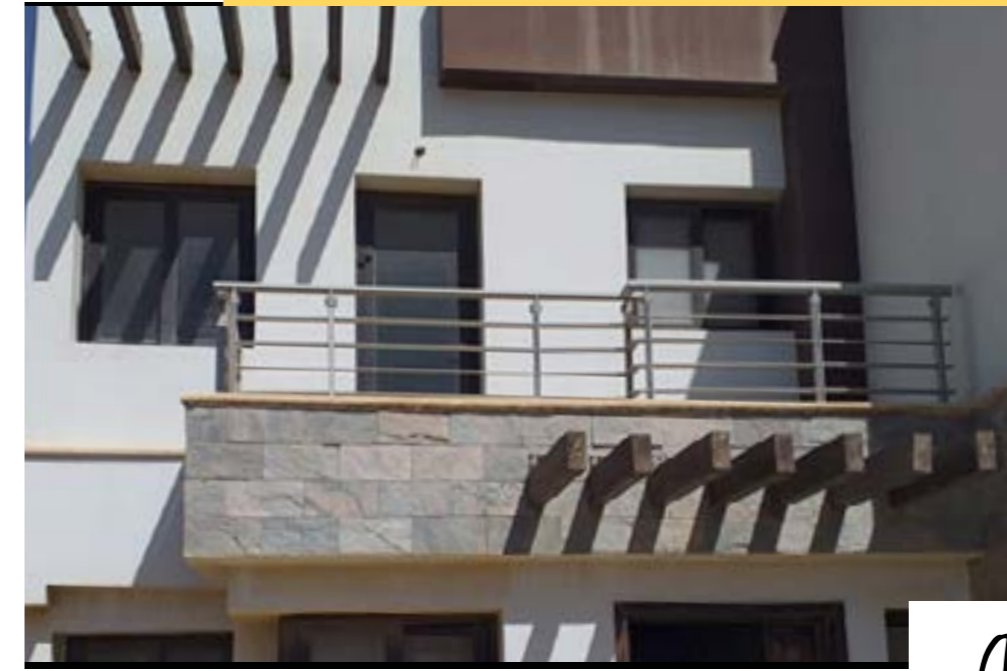
1- BUILDING ITEM 2- ELECTRICITY ITEM 3- PLUMBING ITEM 4- THE INSULATION CLAUSE 5- THE GIBSORD CLAUSE 6- THE WHITENESS CLAUSE 7- THE CONDITIONING CLAUSE 8- THE INNER LADDER CLAUSE 9- THE INSULATION CLAUSE 10- THE CERAMIC CLAUSE 11- THE PAINTS CLAUSE 12- THE CARPENTRY ITEM 13- THE KITCHEN ITEM INCLUDING THE EQUIPMENTS 14- THE MARBLE CLAUSE 15- THE LEATHER ITEM 16- THE GLASS ITEM 17- LUMETAL CLAUSE 18- METAL CLAUSE 19- EXTERNAL WALL CLAUSE 20- EXTERNAL FAÇADE CLAUSE 21- FINAL DECORS CLAUSE INCLUDING ALL FITTINGS

DURATION 3 MONTHS

IMPLEMENTERS NO. 350



Before



After



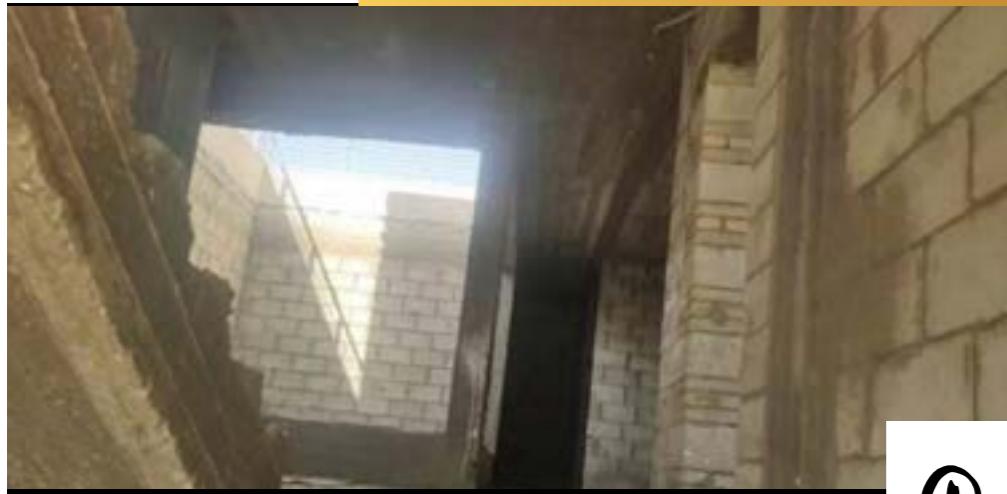
ORIANA

IOPTEC COMPANY

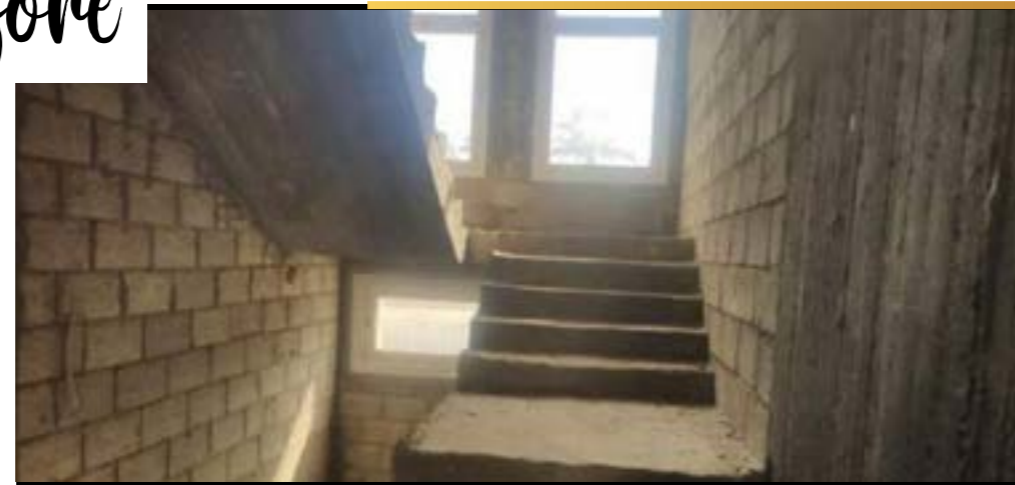
1- REGULAR CONCRETE ITEM 2- REINFORCED CONCRETE CLAUSE

DURATION 2 MONTHS

IMPLEMENTERS NO. 250



Before



After



BEVERLY HILLS

MEDCOM COMPANY

BUILDING 20 PROJECT (SEMI-FINISHED)

PROJECT 8 BUILDINGS (SEMI-FINISHED)

1- THE WHITENESS CLAUSE 2- THE BUILDINGS CLAUSE 3- THE STONE CLAUSE 4- THE MARBLE ITEM 5- THE ELECTRICITY ITEM 6- THE PLUMBING ITEM 7- THE CERAMIC ITEM 8- THE CERAMIC ITEM 9- PAINTS ITEM 10- SUSPENDED CEILING ITEM 11- INTER-LOCK CLAUSE 12- BULLDOZERS ITEM 13- ALUMETAL ITEM

DURATION 2 MONTHS

IMPLEMENTERS NO. 250



Before



After



PORTO OCTOBER

(CONCRETE PLUS) COMPANY

WORK AREA ZONE 9 ZONE 1 (6 IN 1) ZONE 10 (2 IN 1)

1- WHITE WORKS 2- MARBLE WORKS

TRUST COMPANY

WORK AREA ZONE 5 ZONE 11 ZONE 12

1- MARBLE WORKS

DURATION 3MONTHS

IMPLEMENTERS NO. 1500



Before



After



MIVIDA

THE MOSQUE SOCIAL CLUB

1 - ITEM WHITENESS 2- BUILDING ITEM 3- A SUSPENDED CEILING ITEM 4- PAINTS ITEM

AL SHAFAR COMPANY (WAREHOUSE OF METAL) (GMALON)

1- PAVEMENT AND ROAD WORKS 2- ASPHALT AND PLANNING PAINTS 3- INTERLOCK WORKS 4- BARDOURA WORKS
5- CONCRETE WORKS 6- BUILDING WORKS 7- STONE WORKS 8- GRANITE WORKS

DURATION 2 MONTHS IMPLEMENTERS NO. 250



MOUNTAIN VIEW

TRUST COMPANY

1- LANDSCAPE WORKS 2- HARD SCAPE WORKS 3- INTERLOCK WORKS 4- CURBSTONE WORKS 5- AGRICULTURE WORKS

DURATION 3 MONTHS IMPLEMENTERS NO. 3000



PALM HILLS

88 ST MALL PROJECT

1- MECHANICAL MARBLE WORKS

ALLAM SONS COMPANY

1- PLASTER WORKS 2- GYPSUM WORKS 3- ELECTRICITY WORKS

DURATION 2 MONTHS

IMPLEMENTERS NO. 250



HACIENDA BAY

SOCIAL CLUB MAINTENANCE

SPA MAINTENANCE WORK

1- THE ELECTRICITY ITEM 2- THE PLUMBING CLAUSE 3- THE WHITENESS CLAUSE 4- THE CARPENTRY CLAUSE
5- THE CERAMIC ITEM 6- THE SECURITE CLAUSE 7- THE SUSPENDED CEILING CLAUSE 8- THE CRETAL CLAUSE
9- THE MARBLE CLAUSE

HACIENDA BAY MALL SHOPS

1- METRO 2- UGECO COPPERMELT 3- PINK BERRY
1- ELECTRICAL ITEM 2- PLUMBING ITEM 3- THE WHITENESS CLAUSE 4- THE CARPENTRY CLAUSE 5- THE CERAMIC
CLAUSE 6- THE SECURITE CLAUSE 7- THE SUSPENDED CEILING CLAUSE 8- THE CRETAL CLAUSE

HACIENDA BAY NORTH COAST GATES WORKS

1- THE MARBLE CLAUSE 2- THE SECURITE CLAUSE

DURATION 5 MONTHS

IMPLEMENTERS NO. 3800



HYDE PARK

TRUST COMPANY

1- PLASTER WORKS 2- PAINTING WORKS 3- INSULATION WORKS 4- SURFACE LAYING WORKS

DURATION 3 MONTHS

IMPLEMENTERS NO. 1600

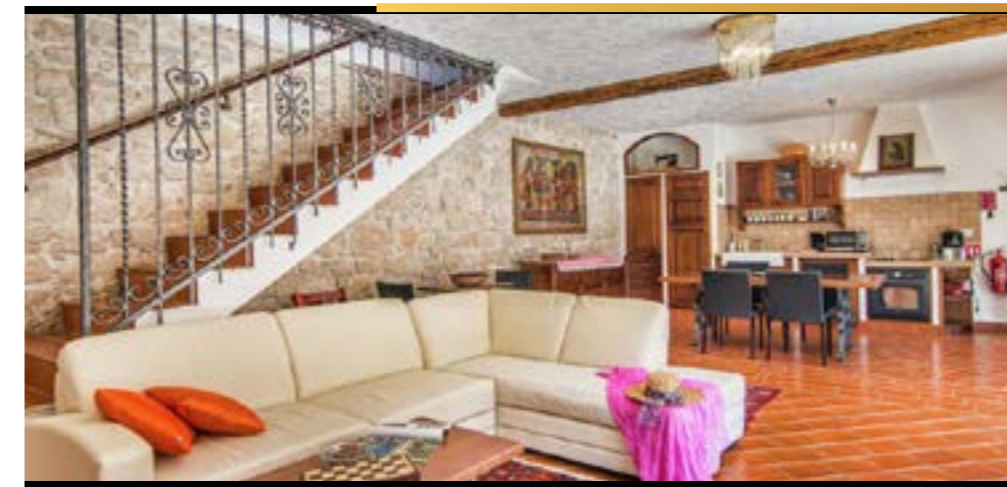


MARASSI NORTH COAST

1- THE ELECTRICITY ITEM 2- THE PLUMBING ITEM 3- THE WHITENESS ITEM 4- THE CARPENTRY ITEM
5- THE CERAMIC ITEM 6- THE MARBLE ITEM 7- THE SUSPENDED CEILING ITEM 8- THE PAINTS ITEM

DURATION 3 MONTHS

IMPLEMENTERS NO. 2400



VILLAS AL SHOROUK CITY , THE LUXURY BEYOND

- THE IDEA OF UNIQUE DESIGN AND INCREDIBLE INNOVATION COMBINED TOGETHER TO REFLECT LUXURY, UNIQUENESS, MODERNIZATION AND CONTEMPORARY IN ARCHITECTURE ART.

A MODERN SUPERIOR DESIGN CONSISTING OF VILLA WITH COMPLETE PRIVACY AND MODERN FACADES OF ARCHITECTURAL DESIGN OF STYLISH GLASS INTERFACE AND A PRIVATE POOL.

THE ARCHITECTURE OF EL SHROUK VILLAS COMBINES MODERN GUIDELINES WITH INFLUENCES FROM THE OLD MANSION HOUSES OF THE VILLAS HAVE ABSOLUTE PRIVACY AND DISCRETION, FEATURING INDEPENDENT ENTRANCES. THE SPACIOUS ENVIRONMENTS OF OUR VILLAS GIVE THE FEELING OF A PRIVATELY-OWNED LARGE RESIDENCE.

OUR PRIORITY AND GREATEST CONCERN IS THE HEALTH, SAFETY AND WELL-BEING OF OUR GUESTS AND STAFF.

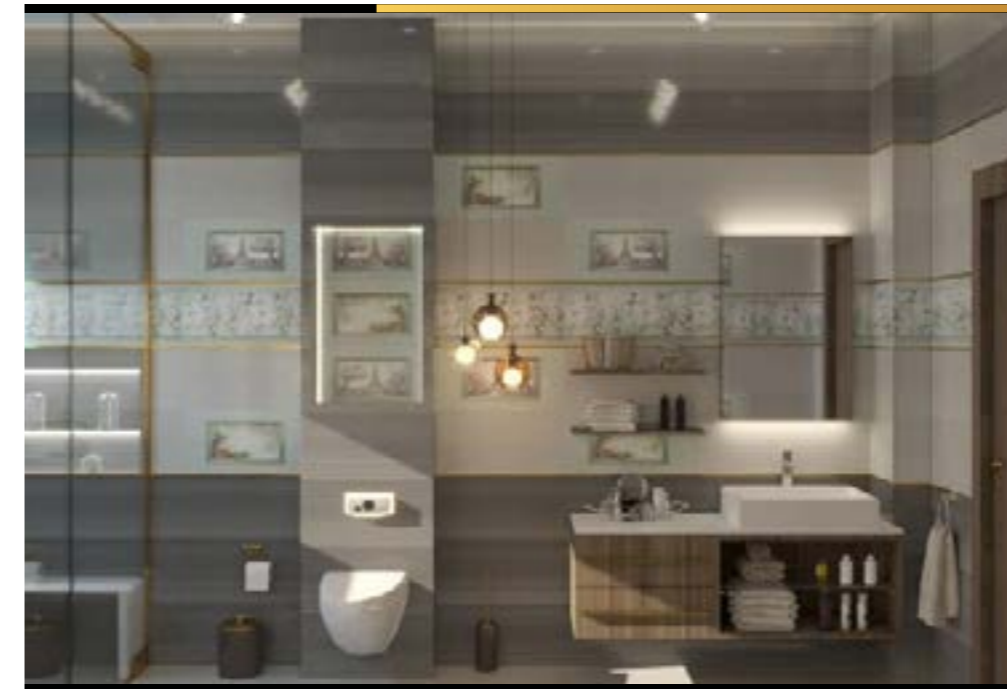
2D & 3D MAX DESIGNS

1- BUILDINGS ITEM

2- ELECTRICITY ITEM 3- PLUMBING CLAUSE 4- INSULATION CLAUSE 5- GIBSORD CLAUSE 6- WHITE CLAUSE 7- ELEVATOR CLAUSE 8- CENTRAL HEATER CLAUSE 9- AIR CONDITIONING CLAUSE 10- LANDSCAPE CLAUSE 11- SWIMMING POOL CLAUSE 12- INSULATION CLAUSE 13- CLAUSE CERAMICS 14- ITEM PAINTS 15- CARPENTRY ITEM 16- KITCHEN ITEM INCLUDING EQUIPMENT 17- MARBLE ITEM 18- TILES ITEM 19- HDF ITEM 20- FINAL DECOR ITEM INCLUDING ALL

DURATION 4 MONTHS

IMPLEMENTERS NO. 600



VILLA LAKEVIEW

- THE LAKE VIEW IS AN ENTICING EXPERIENCE. FROM THE MINUTE YOU WALK THROUGH THE GATE WITH THE WATERFALL WELCOMING YOU, YOU CAN FEEL THE RELAXING ATMOSPHERE. A RECREATION AREA BUILT ON A 75,000 SQ.M PIECE OF LAND MAKES IT EXTREMELY ENJOYABLE TO SPEND YOUR FREE TIME IN THE COMPOUND. A COUNTRY CLUB WITH A LARGE POOL & A HUGE GYMNASIUM OFFER THE ULTIMATE IN SPORTS PLEASURE AND 2 ETHNIC RESTAURANTS OVER SEEING A LAKE ADD CONVENIENCE TO YOUR PLEASURE AND MANY MORE UNIQUE FEATURES. THE LAKE VIEW IS LOCATED IN THE NEW CAIRO AREA ON THE MAIN CITY CENTER ROAD. IT COVERS AN AREA OF 1,250,000 SQ. METERS. IT'S OUR PLEASURE TO DESIGN ONE OF THE VILLAS IN THIS BEAUTIFUL PLACE FROM THE KITCHEN, TO DINING AREA, TO THE LIVING ROOM, TO ALL BEDROOMS AND BATHROOMS, THE STYLE, THE DESIGN AND FUNCTION IS VERY CONSISTANT AND HARMONIOUS .

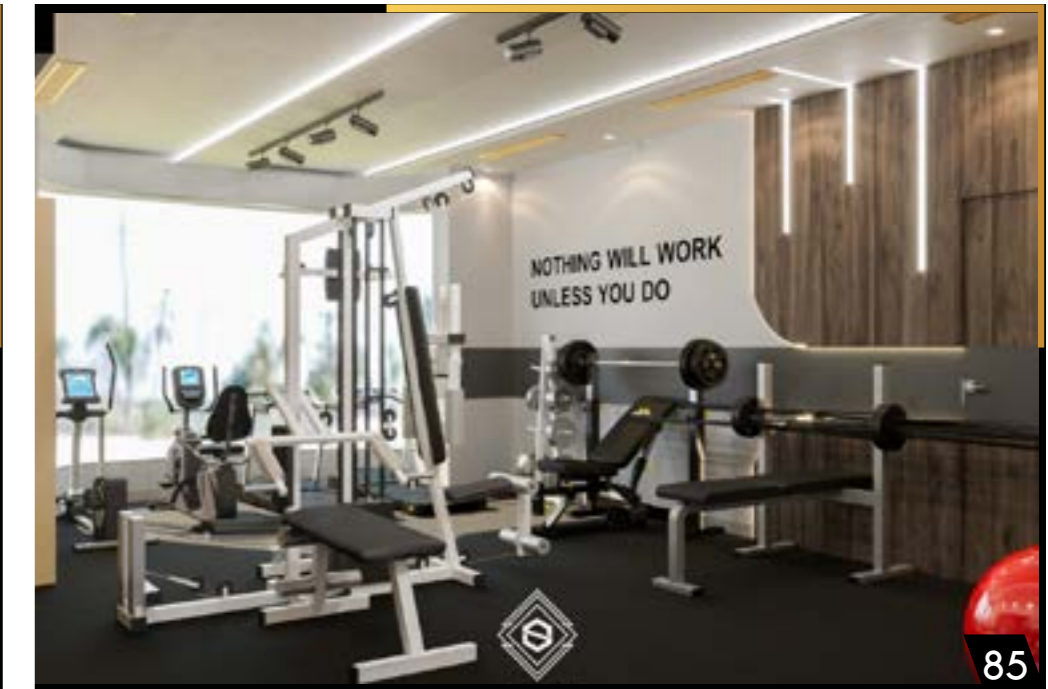
2D & 3D MAX DESIGNS

2D & 3D MAX DESIGNS

1- BUILDING ITEM 2- ELECTRICITY 3- PLUMBING CLAUSE 4- INSULATION ITEM 5- GIBSWORD CLAUSE 6- WHITENESS CLAUSE 7- ELEVATOR ITEM 8- CENTRAL HEATER ITEM 9- AIR CONDITIONING ITEM 10- LANDSCAPING ITEM 11- SWIMMING POOL ITEM 12- INSULATION CLAUSE 13- CERAMIC ITEM 14- PAINTS ITEM 15- CARPENTRY CLAUSE 16- KITCHEN ITEM INCLUDING EQUIPMENT 17- MARBLE CLAUSE 18- TILES ITEM 19- SCULPTOR ITEM 20- SMART HOME ITEM 21- AUTOMATION ITEM 22- METAL ITEM 23- ITEM GLASS 24 - ALUMETAL ITEM

DURATION 6 MONTHS

IMPLEMENTERS NO. 800



VILLA ELSOKHNA

- IT'S BEING SAID THAT A VILLA HAS TO BE A LOYAL REFLECT OF ONE'S SELF PERSONALITY. IN THIS CASE, WE ARE IN FRONT OF AN ADVENTUROUS COUPLE, SEA AND NAVIGATION LOVERS, SEEKING TO CREATE AN OWN ENCLAVE IN OUR ISLAND, SPECIFICALLY IN SOUKHNA . THE OWNERS KNEW RIGHT FROM THE START WHEN HIRING US TO BE THEIR INTERIOR DESIGNER THAT THEY WANTED TO BUILD A SPACE REFLECTING ALL THEIR TRAVELS AND MEMOIRS, WHERE THEY CAN BREATHE ALL THEIR MEMORIES BROUGHT FROM ALL CORNERS OF THE WORLD.

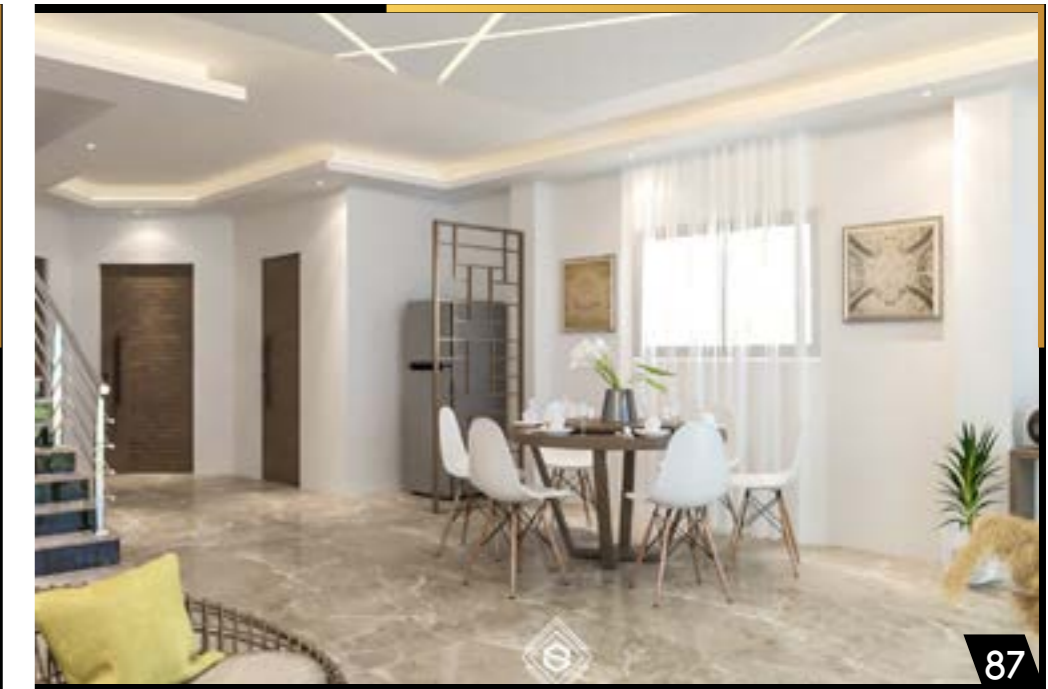
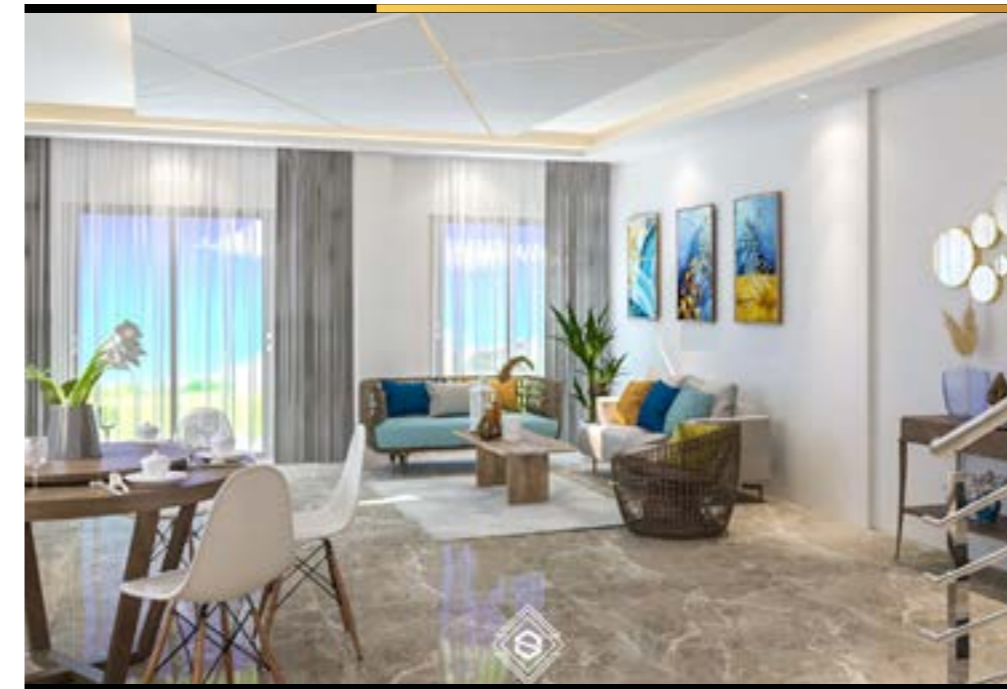
WHAT CATCHES ATTENTION MOST IS THAT EACH ROOM IN THIS HOUSE HAS A UNIQUE AND DISTINCTIVE DECORATION BASED ON A DIFFERENT TOPIC. THE ONLY ASSET THAT REIGNS HERE IS THE LOVE AND CARE WITH WHICH EVERY SINGLE DETAIL WAS CHOSEN. EACH OF THEM IS DEDICATED TO A CERTAIN PASSION OF THE OWNERS.

2D & 3D MAX DESIGNS

1- BUILDING ITEM 2- ELECTRICITY 3- PLUMBING CLAUSE 4- INSULATION ITEM 5- GIBSWORD CLAUSE 6- WHITENESS CLAUSE 7- ELEVATOR ITEM 8- CENTRAL HEATER ITEM 9- AIR CONDITIONING ITEM 10- LANDSCAPING ITEM 11- SWIMMING POOL ITEM 12- INSULATION CLAUSE 13- CERAMIC ITEM 14- PAINTS ITEM 15- CARPENTRY CLAUSE 16- KITCHEN ITEM INCLUDING EQUIPMENT 17- MARBLE CLAUSE 18- TILES ITEM 19- SCULPTOR ITEM 20- SMART HOME ITEM 21- AUTOMATION ITEM 22- METAL ITEM 23- ITEM GLASS 24 - ALUMETAL ITEM

DURATION 6 MONTHS

IMPLEMENTERS NO. 800



BUROUJ (ON GOING)

DORRA COMPANY

1- CERAMIC CLAUSE 2- PAINTS ITEM 3- ELECTRICITY CLAUSE 4- PLUMBING CLAUSE 5- ALUMETAL CLAUSE
6- INTERLOCK WORKS 7- CURBSTONE CLAUSE

DURATION 4 MONTHS

IMPLEMENTERS NO. 1000



EL MANSOURA 7 NEW CAPITAL ONGOING PROJECT

1- GYPSUM BOARD ITEM 2- WHITENESS CLAUSE 3- PAINTS ITEM

DURATION 4 MONTHS

IMPLEMENTERS NO. 90

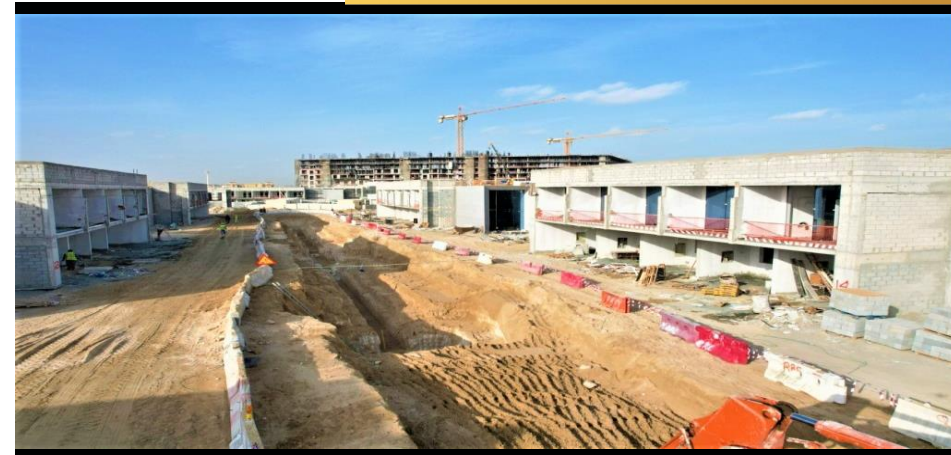


OTHER PROJECTS

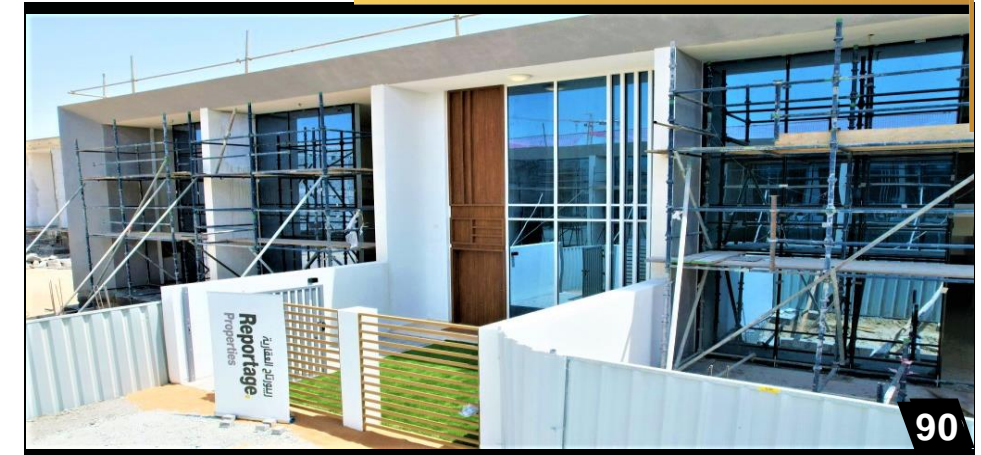
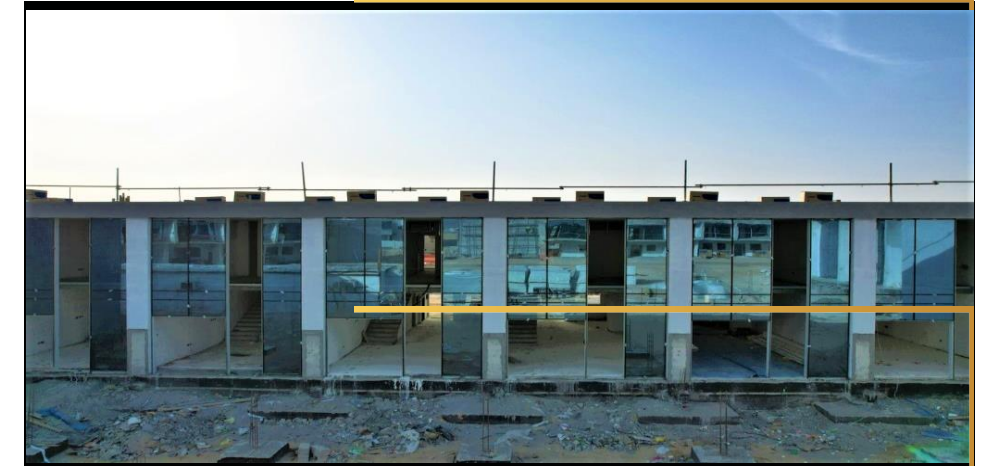


RUKAN LOFTS

PROJECT MAIN CONTRACTOR : REPORTAGE PROPERTIES
Location : 27RQ+R5R - Dubai - United Arab Emirates



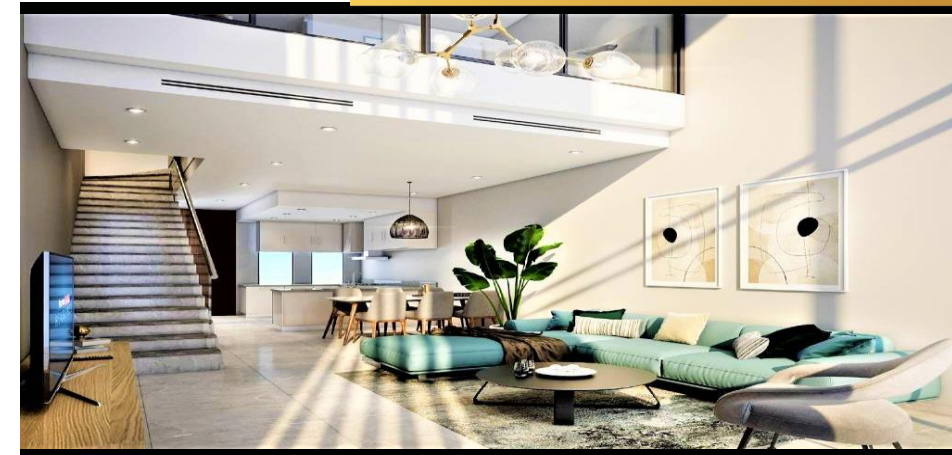
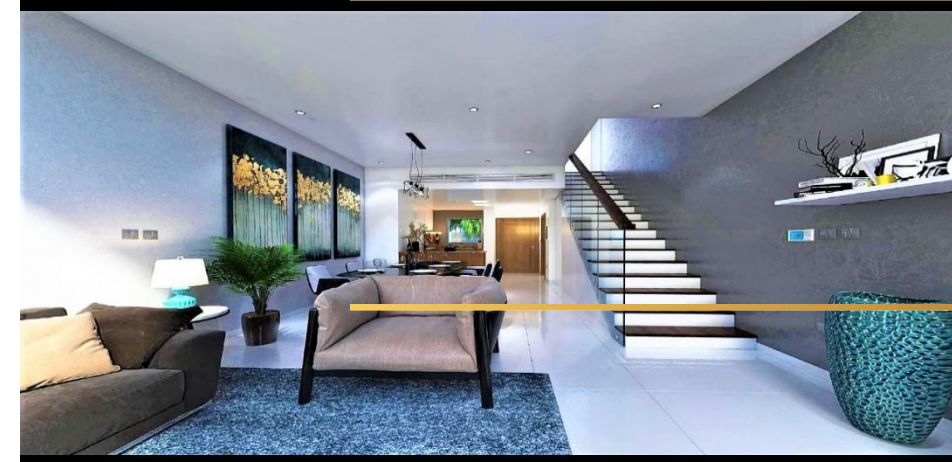
CONSTRUCTION UPDATE



EXTERIORS



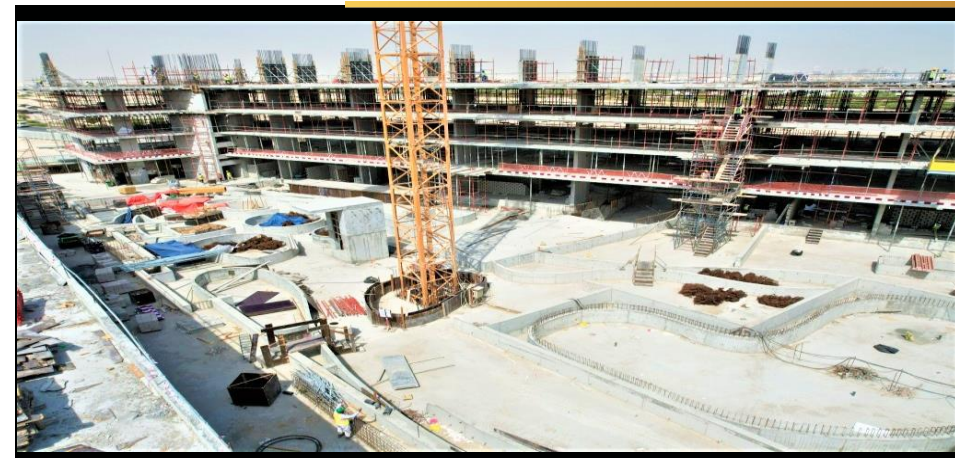
INTERIORS



THE GATE

PROJECT MAIN CONTRACTOR : REPORTAGE PROPERTIES

Location : CJP9+C7J - Khalifa City - Abu Dhabi - United Arab Emirates



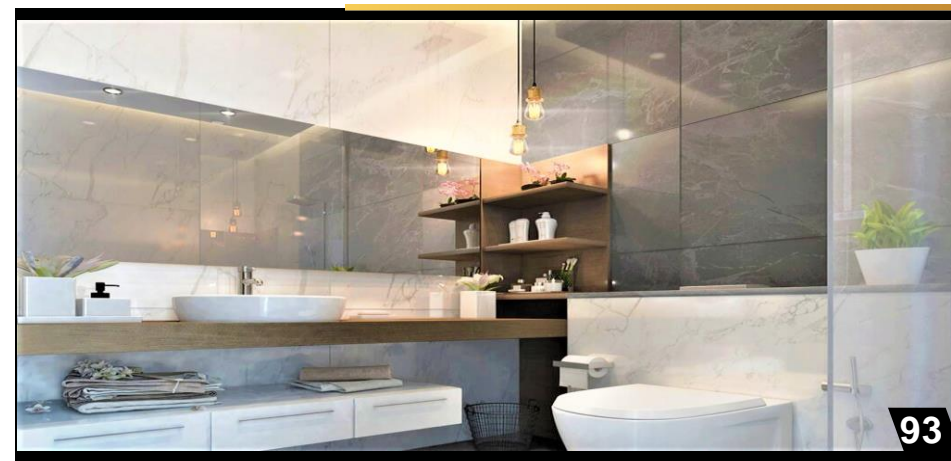
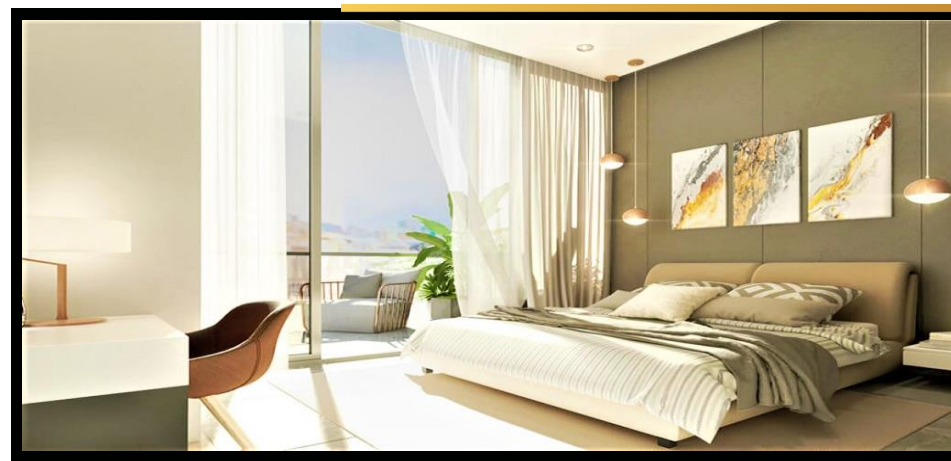
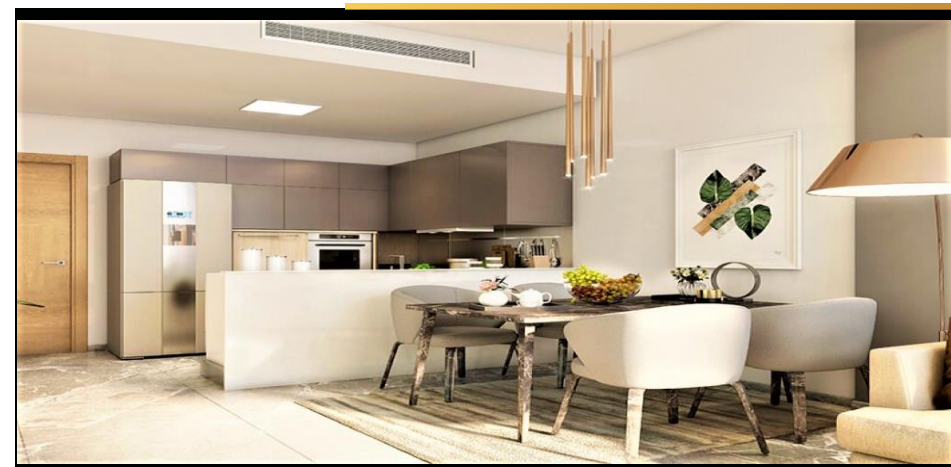
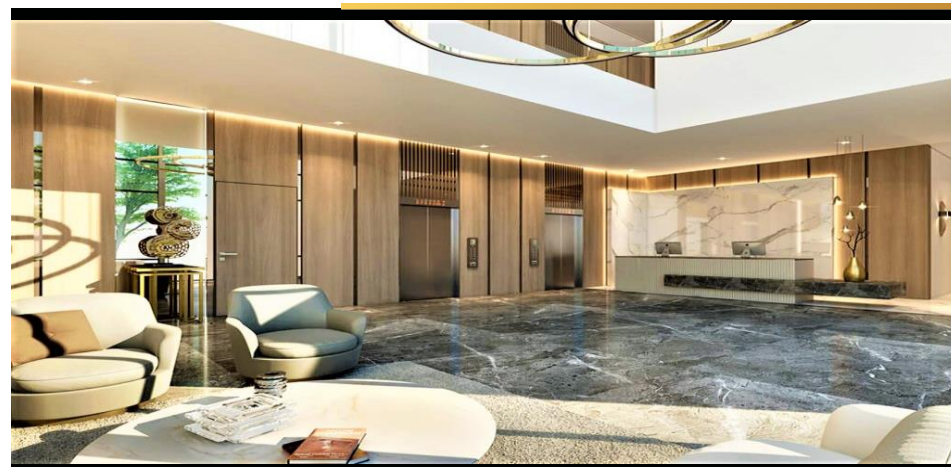
CONSTRUCTION UPDATE



EXTERIORS



INTERIORS



RESIDENTIAL VILLAS

PROJECT MAIN CONTRACTOR : FOLLOW US REAL ESTATE MANAGEMENT L.L.C
Location : Mohamed Bin Zayed City - Abu Dhabi - United Arab Emirates



CONSTRUCTION UPDATE





SOLIC

CONTRACTING & REAL ESTATE



FOLLOW US

CONTRACTING & REAL ESTATE



SOLIC

CONTRACTING & REAL ESTATE



FOLLOW US

CONTRACTING & REAL ESTATE

✉ solicct@gmail.com

☎ +2 374 990 29
+971 504625018
+2 01224400059

📍 Building M_12 Mussafah Commercial,
AbuDhabi, UAE

📍 Building 3A Dr. El Sobky St, Dokii,
Giza, Egypt

📘 SolicEG
📷 soliccontracting